

# HX-07

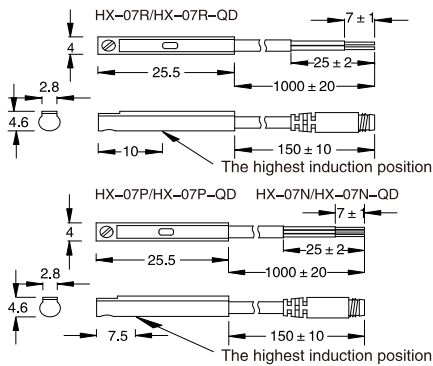
## Magnet Switch



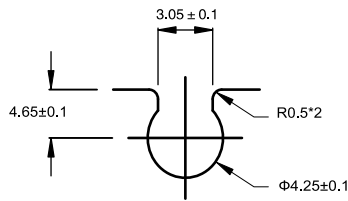
### How to Order?

|              |   |            |   |  |   |  |
|--------------|---|------------|---|--|---|--|
| <b>HX</b>    | - | <b>07</b>  | - | <b>D</b>   | - | <b>2M</b>  |
| Product code |   | Series NO. |   | Switch Type<br>D: Two wire without contact switch<br>N: NPN type<br>P: PNP type<br>R: Two wire reed switch |   | Wire length<br>2M: 2M<br>5M: 5M<br>10M: 10M<br>.....<br>QD8: QD8 Male connector<br>QD12: QD12 Male connector<br>Note: The standard wire length of the quick connector is 0.15m. Other wire lengths cannot be ordered |

### Dimension



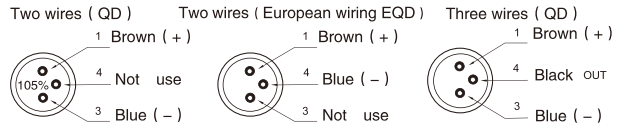
### Groove Dimension



Suitable for cylinder:

- SQ/SQM/EU/EUK/
- EUM/EUP/SF/SFM/
- SQK/SG//EMQ/ELS/
- ELQ/EXH/ESWT
- \*SHY/SHZ (except  $\phi 10$ )

### M8/M12 male wiring diagram



### Specifications

| Type                     | HX-07D   | HX-07N   | HX-07P             | HX-07R  |
|--------------------------|--|--|--------------------|---|
| Connect Diagram          |  |  |                    |   |
| Parameter                |  |  |                    |   |
| Wiring method            | 2-Wire Type                                      | 3-Wire Type                                      |                    | 2-Wire Type                                     |
| Switching logic          |  | Electronic no contact type N.O.                  |                    | SPST Normally Open                              |
| Sensor type              | None contact type                                | NPN type ( Input)                                | PNP type ( Output) | Reed switch                                     |
| Operating voltage        | 10-28V DC  | 5-30V DC   |                    | 5-240V DC/AC                                    |
| Max. switching current   | 50mA max   | 200mA max.                                       |                    | 100mA max.                                      |
| Contact rating           | 1.4 W max  | 6W max.  |                    | 10W max.  |
| Current consumption      | 40 $\mu$ A max @ 24V                             | 8mA max @ 24V (Switch Active)                    |                    | None  |
| Voltage drop             | 2.8 V max.                                       | 1 V max. @ 200mA DC                              |                    | 2.5 V max.                                      |
| Leakage current          | 90 $\mu$ A max @ 28V                             | 0.01mA max.                                      |                    | None  |
| Indicator                |  | Red LED  |                    |   |
| Max. exchange frequency  |  | 1000Hz   |                    | 200Hz   |
| Temperature range        |  | -10 - 70°C                                       |                    |   |
| Shock                    |  | 50G  |                    | 30G   |
| Vibration                |  | 9G   |                    |   |
| Enclosure classification |  | IEC 529 IP67 (NEMA 6)                            |                    |   |
| Protection circuit       | 2, 4   | 3, 4   |                    | 1   |
| Cable                    | 2,6 $\Phi$ , 2C, Black color, oil resistance PVC | 2,6 $\Phi$ , 3C, Black color, oil resistance PVC |                    | 2,6 $\Phi$ , 2C, Gray color, oil resistance PVC |
| Switch sensitive         |  | 40-750G  |                    | 70G   |