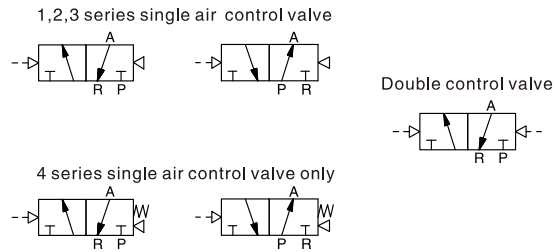


RV Series Air Control Valve (3/2 way)

RV

Air Control Valve (3/2 way)



How to Order?

Series No.	Ways	Positions	Valve Body ID Code	Controls	Initial Status	Port Size	Reset Type	Thread Type
RVA	3: 3 ways	2:2 positions	1: 1Series 2: 2Series 3: 3Series 4: 4Series	1: Single control 2: Double control	Blank: Normal close(N.C) H: Normal open(N.O)	M5: M5 06: 1/8" 08: 1/4" 10: 3/8" 15: 1/2"	Blank: Spring return (Apply to 4 series single control valve) Q: Air return (Apply to 1,2,3 series single control valve)	Blank: G P: PT T: NPT

Order Example:

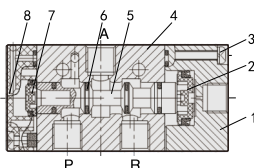
RVA series air control valve, 3/2 way, 2 series valve body size, single control, NC type, 1/4" port size, air return, PT thread
ERP code is: RVA3221-08Q-P

Specifications

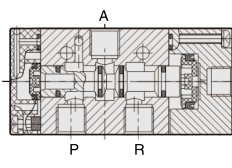
Model No.	RVA3211-M5 RVA3212-M5	RVA3211-06 RVA3212-06	RVA3221-06 RVA3222-06	RVA3221-08 RVA3222-08	RVA3231-08 RVA3232-08	RVA3231-10 RVA3232-10	RVA3241-10 RVA3242-10	RVA3241-15 RVA3242-15
Port size	M5	G1/8	G1/8	G1/4	G1/4	G3/8	G3/8	G1/2
Sectional area(mm)	5.5(CV=0.31)	12(CV=0.67)	14(CV=0.78)	16(CV=0.89)	25(CV=1.40)	30(CV=1.68)	50(CV=2.79)	50(CV=2.79)
Working medium	Clean air(After 40 μm filtration)							
Acting type	External type							
Reset type	Air reset						Spring reset /Air reset	
Lubrication	Not required							
Working pressure(MPa)	0.15~0.8							
Guaranteed Pressure(MPa)	1.2							
Working temperature(°C)	-20~70(No freezing)							
Max. acting frequency	5 Cycles/s							
Weight(g)	RVA3211:60 RVA3212:75	RVA3221:116 RVA3222:143		RVA3231:187 RVA3232:220		RVA3241:378 RVA3242:430		

Internal Structure

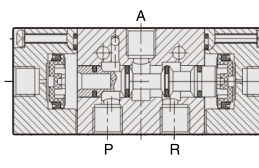
Single Air Control(N.C)



Double Air Control(N.O)



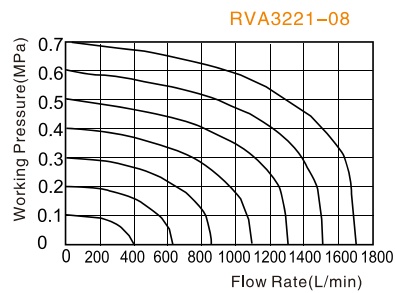
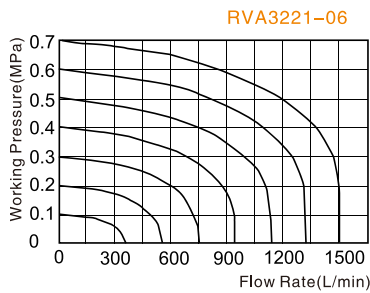
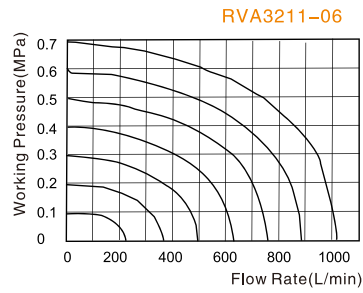
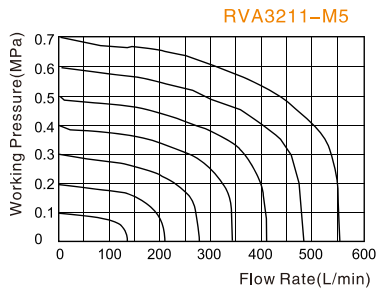
5/3 Ways Solenoid Valve



No.	Part Name	Material
1	Air Control Cover	Aluminum Alloy
2	Piston	POM
3	Screw	Carbon Steel
4	Valve Body	Aluminum Alloy
5	Spool	Aluminum Alloy
6	O-ring	NBR
7	Piston	POM
8	Rear Cover	Zinc Alloy

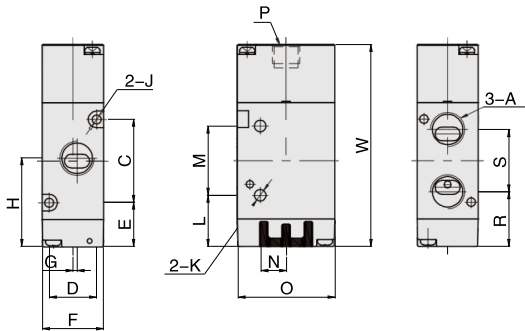
RV Series Air Control Valve (3/2 way)

Flow Chart

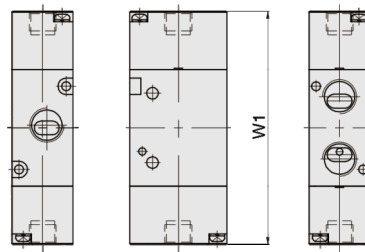


Main Dimension

Single Air Control



Double Air Control



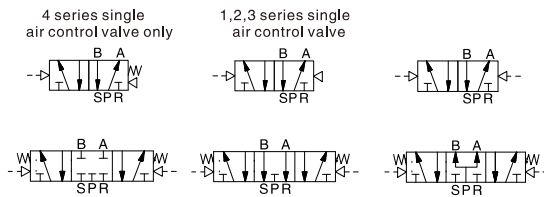
Model/Sign	A	C	D	E	F	G	H	J	K	L	M	N	O	P	R	S	W	W1*
RVA3211-M5	M5	19	13	16.5	18	0	26	3.3	3.1	15.5	21	6	27	G1/8	18.9	14.2	61	70
RVA3211-06	G1/8	19	13	16.5	18	1.5	27	3.3	3.1	15.5	21	6	27	G1/8	18	16	61	70
RVA3221-06	G1/8	30	17	16	22	0	31	3.3	4.2	18.5	25	9.3	35	G1/8	20	22	73	84
RVA3221-08	G1/4	30	17	16	22	1.5	32	3.3	4.2	18.5	25	9.3	35	G1/8	19.8	22.5	73	84
RVA3231-08	G1/4	35	20	19.1	27	0	36.6	4.3	4.3	21.6	30	9.5	40	G1/8	24.6	24	84.6	96
RVA3231-10	G3/8	35	20	19.1	27	2	36.6	4.3	4.3	21.6	30	9.5	40	G1/8	24.6	24	84.6	96
RVA3241-10	G3/8	40.5	27	24.8	34	0	45	4.3	5.2	21	48	11.5	50	G1/8	29.3	31.5	103	116
RVA3241-15	G1/2	40.5	27	24.8	34	2	45	4.3	5.2	21	48	11.5	50	G1/8	29.3	31.5	103	116

Note: The dimension of N.O type and N.C type are same, W1* is the dimension of double control type.

RV Series Air Control Valve (5/2,5/3 way)

RV

Air Control Valve (5/2,5/3 way)



How to Order?

Series No&Ways	Positions	Valve Body ID Code	Controls	Initial Status	Port Size	Reset Type	Thread Type
RVA	5: 5 ways 3:3 positions	1: 1Series 2: 2Series 3: 3Series 4: 4Series	1: Single control 2: Double control	C: Center close P: Center pressure E: Center exhaust (only for 5/3 ways)	M5: M5 06: 1/8" 08: 1/4" 10: 3/8" 15: 1/2"	Blank: Spring return (Apply to 4 series single control valve) Q: Air return (Apply to 1,2,3 series single control valve)	Bland: G P: PT T: NPT

Order Example:

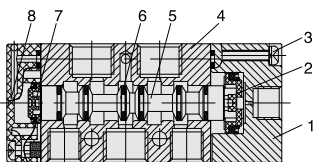
RV series air control valve, 5/2 way, 2 series valve body size, single control, 1/8" port size, air return, G thread, ERP code is: RVA5221-06Q

Specifications

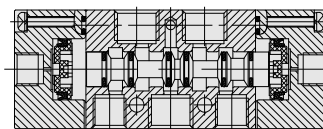
Model No.	RVA5211-M5 RVA5212-M5 RVA5312-M5	RVA5211-06 RVA5212-06 RVA5312-06	RVA5221-06 RVA5222-06 RVA5322-06	RVA5221-08 RVA5222-08 RVA5322-08	RVA5231-08 RVA5232-08 RVA5332-08	RVA5231-10 RVA5232-10 RVA5332-10	RVA5241-10 RVA5242-10 RVA5342-10	RVA5241-15 RVA5242-15 RVA5342-15
Port size	M5	G1/8	G1/8	G1/4(Ex.G1/8)	G1/4	G3/8(Ex.G1/4)	G3/8	G1/2
Sectional area(mm)	5/2: 5.5(CV=0.31) 5/3: 5.5(CV=0.28)	5/2: 12(CV=0.67) 5/3: 9(CV=0.50)	5/2: 14(CV=0.78) 5/3: 12(CV=0.67)	5/2: 16(CV=0.89) 5/3: 12(CV=0.67)	5/2: 25(CV=1.40) 5/3: 18(CV=1.00)	5/2: 30(CV=1.68) 5/3: 18(CV=1.00)	5/2: 50(CV=2.79) 5/3: 30(CV=1.67)	5/2: 50(CV=2.79) 5/3: 30(CV=1.67)
Working medium	Clean air(After 40 μm filtration)							
Acting type	External type							
Reset type	Air reset						Spring reset / Air reset	
Lubrication	Not required							
Working pressure(MPa)	0.15~0.8							
Guaranteed pressure(MPa)	1.2							
Working temperature(°C)	-20~70 (No freezing)							
Max. acting frequency	5/2: 5 Cycles/s; 5/3: 3 Cycles/s							
Weight(g)	RVA5211:72 RVA5212:87 RVA5312:181	RVA5221:128 RVA5222:153 RVA5322:219	RVA5231:218 RVA5232:260 RVA5332:358	RVA5241:437 RVA5242:490 RVA5342:598				

Internal Structure

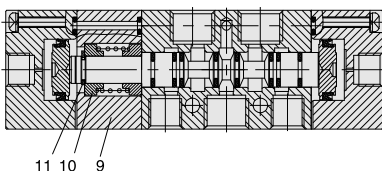
Single Air Control



Double Air Control



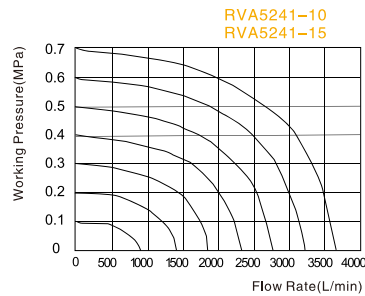
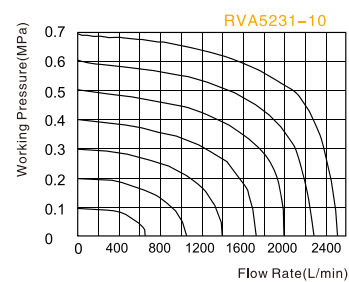
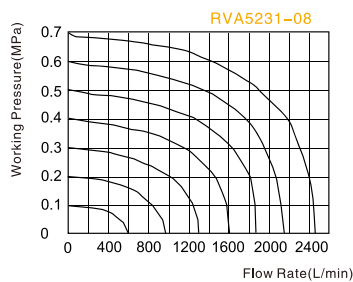
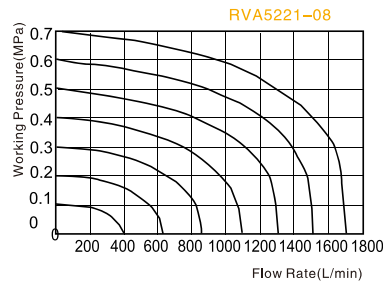
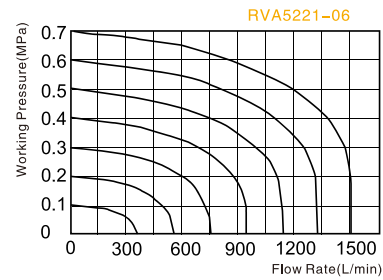
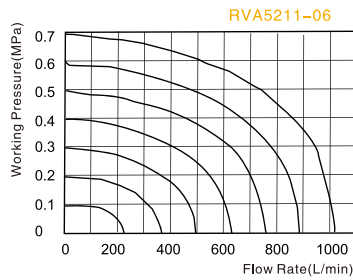
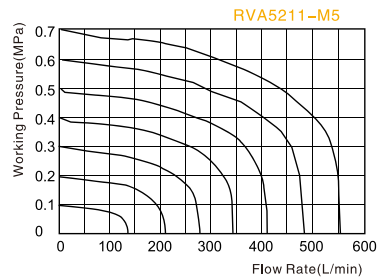
5/3 Ways Solenoid Valve



No.	Part Name	Material
1	Air Control Cover	Aluminum Alloy
2	Piston	POM
3	Screw	Carbon Steel
4	Valve Body	Aluminum Alloy
5	Spool	Aluminum Alloy
6	O-ring	NBR
7	Piston	POM
8	Rear Cover	Zinc Alloy
9	Back Seat	Aluminum Alloy
10	Spring Seat	Aluminum Alloy
11	C-type Buckle	65Mn

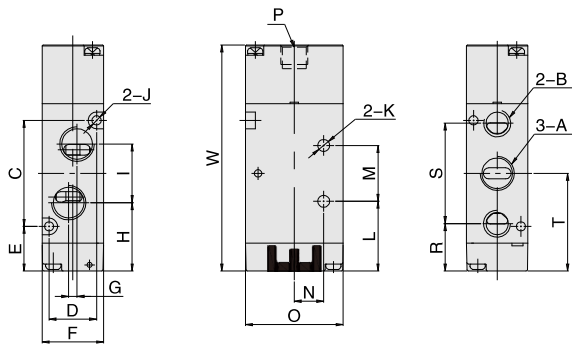
RV Series Air Control Valve (5/2,5/3 way)

Flow Chart

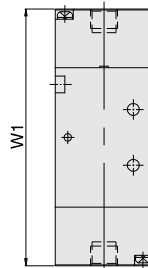


Main Dimension

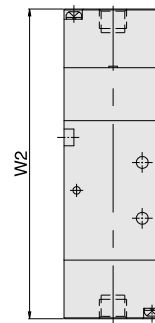
Single Air Control



Double Air Control



5/3 Ways Solenoid Valve



Model\Sign	A	B	C	D	E	F	G	H	I	J	K	L	M	N	O	P	R	S	T	W	W1	W2
RVA5211-M5	M5	M5	30	13	16.5	18	0	24.5	14.1	3.3	3.3	24.5	14	9.5	27	G1/8	17.9	27.2	31.5	72	81	96
RVA5211-06	G1/8	G1/8	30	13	16.5	18	3	23.5	16	3.3	3.3	24.5	14	9.5	27	G1/8	17.5	28	31.5	72	81	96
RVA5221-06	G1/8	G1/8	38	17	16	22	0	26	18	3.3	4.3	25	20	10.5	35	G1/8	17	36	35	81	92	111
RVA5221-08	G1/4	G1/8	38	17	16	22	3	24.5	21	3.3	4.3	25	20	10.5	35	G1/8	17	36	35	81	92	111
RVA5231-08	G1/4	G1/4	50	20	19.1	27	0	33.1	22	4.3	4.3	32.1	24	13.5	40	G1/8	21.6	45	44.1	99.6	111	130
RVA5231-10	G3/8	G1/4	50	20	19.1	27	4	32.1	24	4.3	4.3	32.1	24	13.5	40	G1/8	21.6	45	44.1	99.6	111	130
RVA5241-10	G3/8	G3/8	72	27	21	34	0	39	36	4.3	5.2	43	28	17.5	50	G1/8	25.5	63	57	127	140	161
RVA5241-15	G1/2	G1/2	72	27	21	34	4	39	36	4.3	5.5	43	28	17.5	50	G1/8	25.5	63	57	127	140	161